

10 Stonor

K L C C



- HOTEL
- MEDICAL CENTRES
- CORPORATE OFFICE / BANKS
- SHOPPING / F&B
- PUBLIC AMENITIES / ATTRACTIONS
- EDUCATION
- EMBASSIES
- LRT / TRAMS
- MONORAIL SERVICES

10 Stenor
K L C C

GPS Latitude 3°9'11.3"
Longitude 101°43'16.6"



PRIME PROPOSITIONS



BSG | Property®

elevate life

For more info: **+852 5808 3897** | contactus@bsg.com.my

Head Office 25 - B Farquhar Street, 10200 Penang, Malaysia T: +604-263 7888 F: +604-261 6985
 The Galleria 52, Jalan Sultan Ahmad Shah, 10400 Penang, Malaysia T: +604-229 6288 F: +604-228 0188
 Permai Galleria Lot 10111, Jalan Lembah Permai, 11200, Tanjung Bunga, Penang, Malaysia T: +604-891 2828 F: +604-891 8008
 Butterworth Sales & Concept Gallery 7228, Jalan Permatang Pauh, Taman Bagan, 13400 Butterworth, Penang, Malaysia T: +604-333 1888 F: +604-332 1888

M: +6016-419 9003 • +6012- 523 5300 • +6012-498 0300 • +6016-418 0001 • +6012-567 5200

www.bsgproperty.com



DISCLAIMER For Internal Circulation Only
 Images shown here are artist impressions only. All the information and illustrations contained herein are subject to changes without prior notice, and cannot be relied upon as an accurate description of the products.

a city that
encapsulates the
best of malaysia



An international fashion hub



Get into the swing of exciting activities




10 Stonor
K L C C

Joining ranks with some of Kuala Lumpur's most iconic skyscrapers, 10 Stonor rises majestically from the very heart of Malaysia's bustling capital city. Located along the prestigious embassy enclave of central Kuala Lumpur, 10 Stonor is conveniently surrounded by a diverse range of top commercial and lifestyle destinations, providing an urban living experience unlike any other.



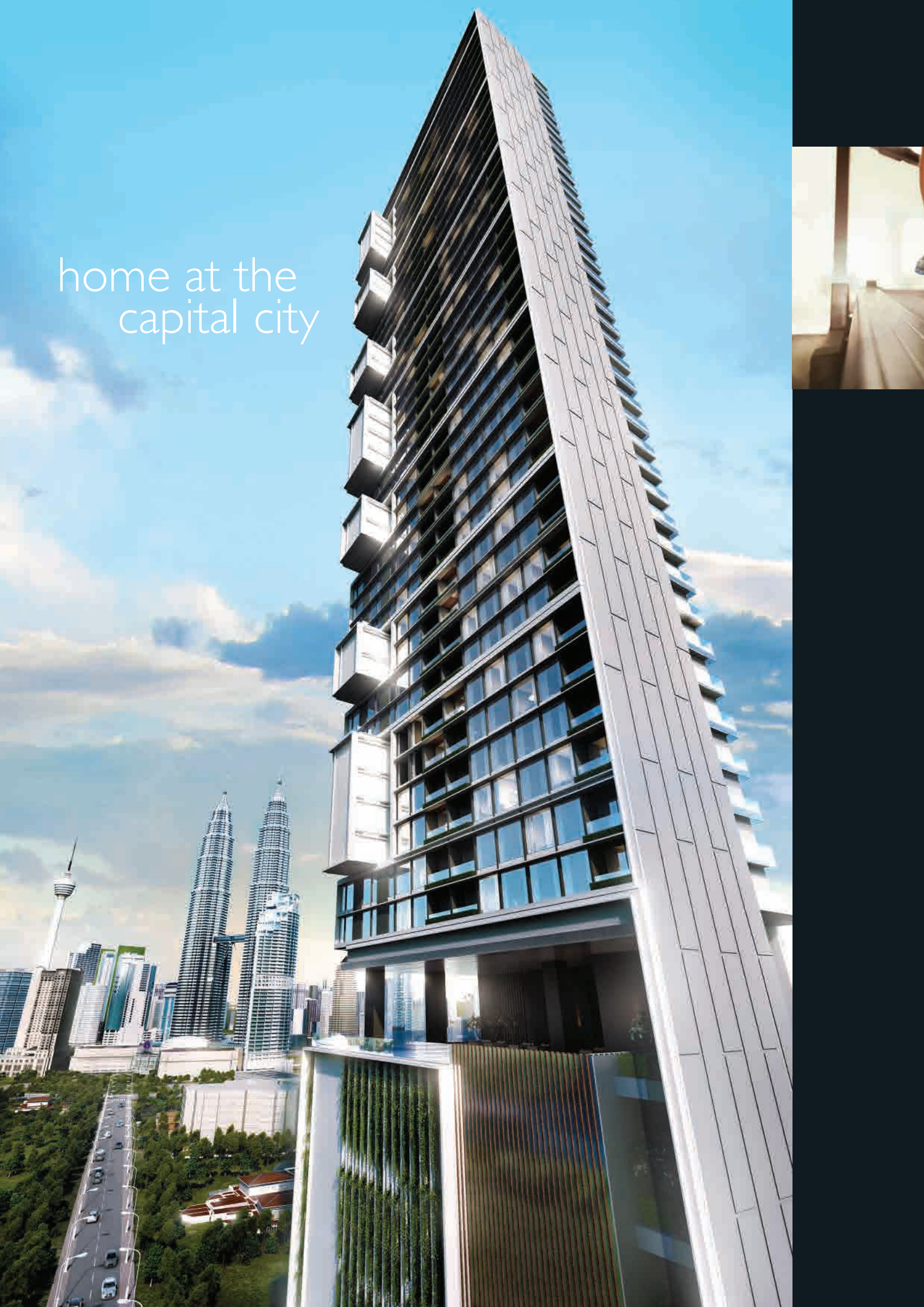
Home to the world's leading financial institutions



Malaysia's centre of lifestyle, culture and business

A world-renowned city, Kuala Lumpur is where the country's finest come together. Here is where you will find world-class dining, shopping, recreation as well as employment and business opportunities. Discover within your doorstep a variety of international destinations, namely Suria KLCC Shopping Mall, Pavilion Shopping Mall, Royal Selangor Golf Club, Prince Court Medical Centre, KLCC Park and many more.

home at the
capital city





Fully equipped gym



Meticulously landscaped sky garden



Elevated infinity pool

Towering over the city at 49 storeys high, 10 Stonor delivers a soaring statement about your status and lifestyle that is distinctively above the rest. Equally as stunning as its facade, the interiors of 10 Stonor feature stylish living spaces that is specially designed to integrate seamlessly with your active, versatile lifestyle.

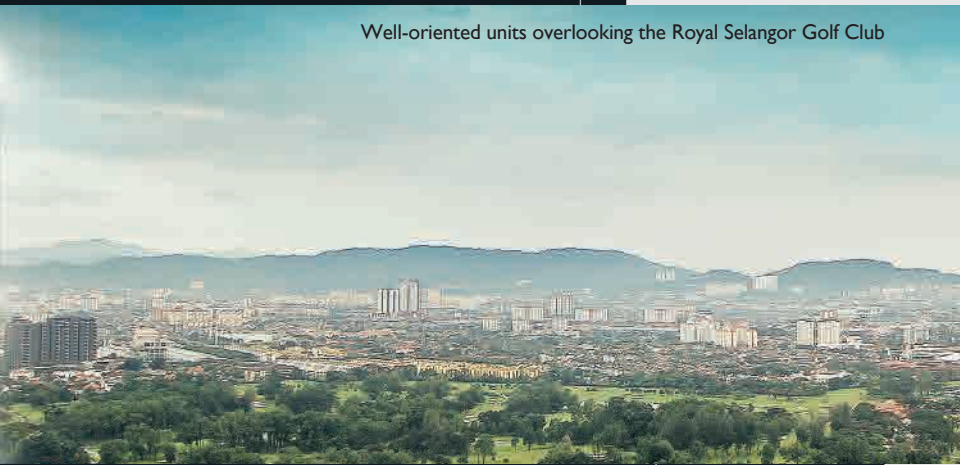
10 Stonor takes the lifestyle aspect one notch higher with a luxurious array of facilities available including a grand lobby, fully-equipped gym, elevated infinity pool and lush sky garden. With all of these exclusive features for your indulgence, complemented with panoramic views of the vibrant Kuala Lumpur cityscape - 10 Stonor may ultimately be, your perfect Home in the Capital City.



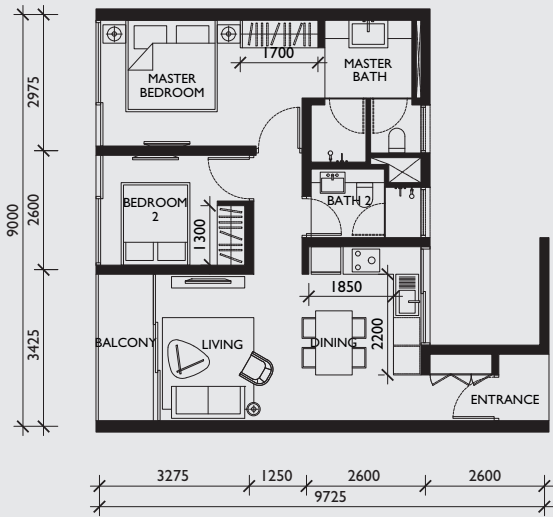
City skyline view from the spacious bedroom



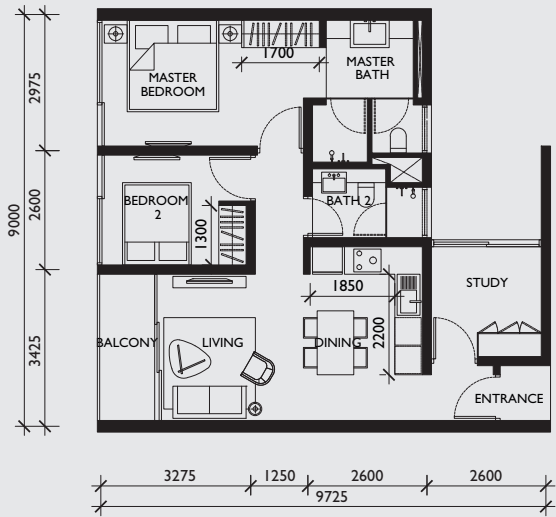
Well-oriented units overlooking the Royal Selangor Golf Club



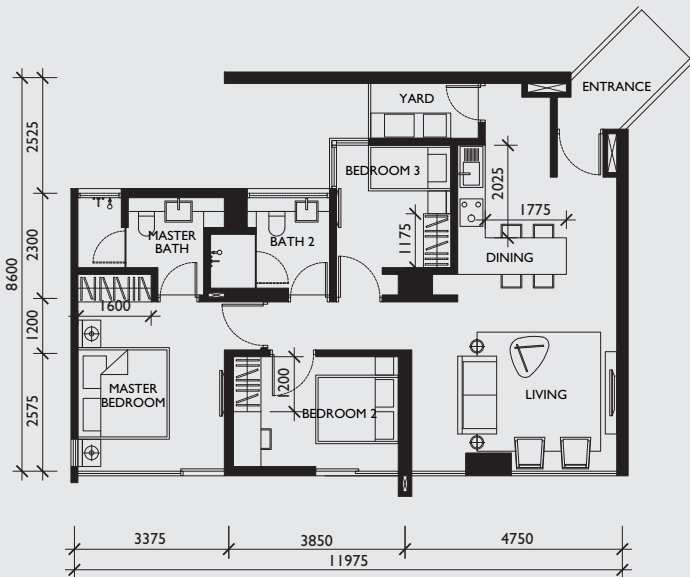
- 49-storey design-driven skyscraper with 364 units of elite residences
- GFA from 736 sq ft to 1,114 sq ft
- Versatile layout choices of 2 & 3 bedrooms available to suit individual lifestyles
- Located in Kuala Lumpur City Centre, Malaysia's bustling capital city
- Surrounded by top commercial and entertainment venues
- Within walking distance to Petronas Twin Towers, KLCC Park and Royal Selangor Golf Club
- Home to the world's leading financial, stock exchanges and business institutions
- Well-connected to world-class transportation and infrastructure
- Grand lifestyle lobby with luxurious finishes and fixtures
- Elevated infinity pool offering spectacular views of the vibrant KL cityscape
- Other impressive array of sky facilities including a full-fledged gym, a tastefully landscaped sky garden and many more
- 4-tier security with 24-hour surveillance



type A | GFA approx.
736 sq.ft. (68 sq.m.)
level : 9 - 18



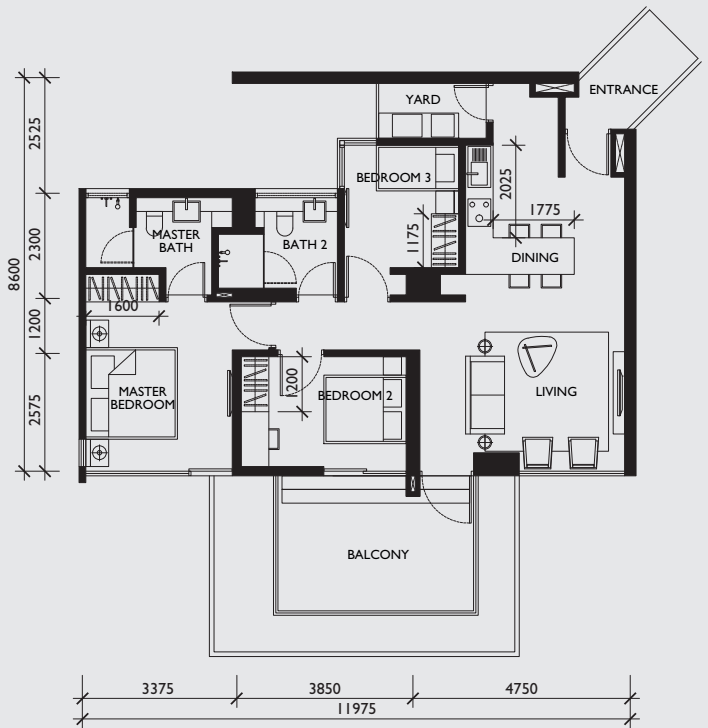
type B | GFA approx.
801 sq. ft. (74 sq. m.)
level : 19 - 47



type C* | GFA approx.
971 sq. ft. (90 sq.m.)

* LEVEL

West	12	13	14	18	24	28	29	30	34	40	44	45	46
South	9	10	16	20	21	22	26	32	36	37	38	42	



type CI* | GFA approx.
1114 sq. ft. (103 sq. m.)

* LEVEL

West	11	17	23	27	33	39	43
South	15	19	25	31	35	41	47

